

## Installation of Wi-Fi module and app connection (Aduro P1)

1. Download the **Aduro Pellet Stove** app via Google Play (Android) or App Store (iOS).
2. To login, you can either [create an account](#) or [sign in with Google/Apple](#) or [Facebook](#).
3. Connect the Wi-Fi module to the stove, using the DB9 plug (see the pictures 1 and 2 below).

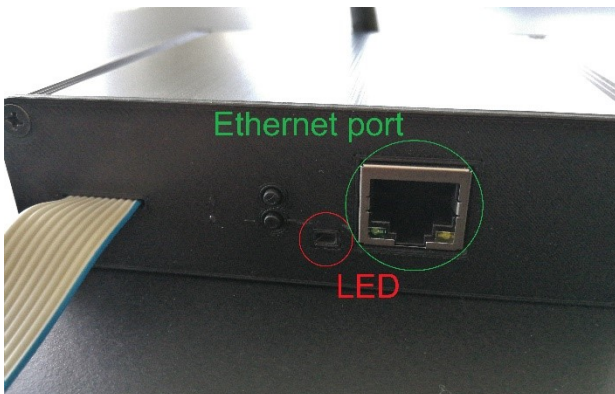


Picture 1



Picture 2

4. The LED (see picture 3) on the Wi-Fi module will flash orange and eventually turn solid blue.



Picture 3

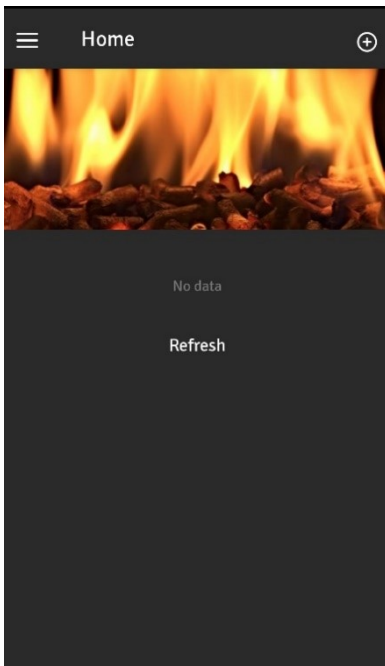


Picture 4

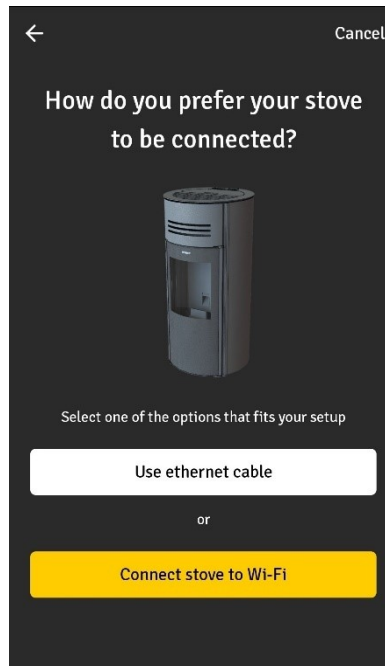
5. Two possibilities to connect:  
You can either connect your stove to the internet with an ethernet cable or via Wi-Fi. Follow one of the following two descriptions to connect to your network.

### a. Ethernet connection

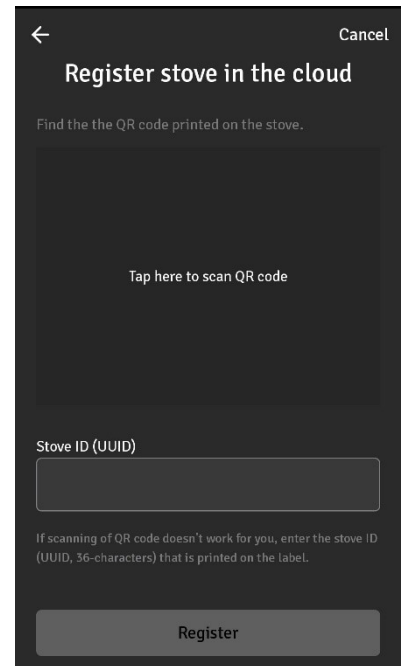
You can connect the Wi-Fi module to the internet, using the ethernet port (see picture 3). In this case, the LED will turn solid green shortly after the ethernet cable is connected to the module. In order to add your stove in the app, click on the **+** symbol in the top right corner of the app front page (see picture 5 below). Choose [Use ethernet cable](#) (see picture 6) and Scan the QR code on your Wi-Fi module (see picture 4). Click [Register](#) to connect your stove to the internet (see picture 7).



Picture 5



Picture 6

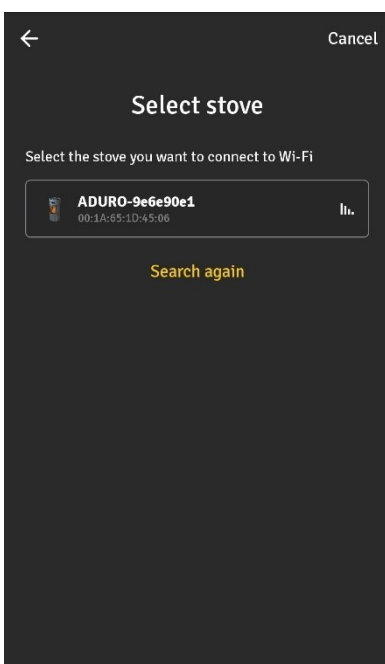


Picture 7

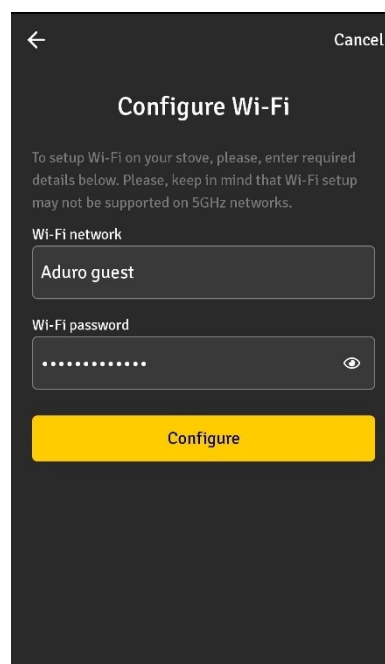
#### b. Wi-Fi connection

For wireless connection you need to enable *Bluetooth* and *Location* on your device and open the **Aduro Pellet Stove** app. Click on the **+** symbol in the top right corner of the home screen in the app (see picture 5) and choose **Connect stove to Wi-Fi** (see picture 6). Select the stove that appears in the app (see picture 8). The Wi-Fi module will search for available Wi-Fi networks. Choose your home Wi-Fi and type in the password to connect to the internet (see picture 9). Once there is a connection (see picture 10), you can access and control your stove via the app.

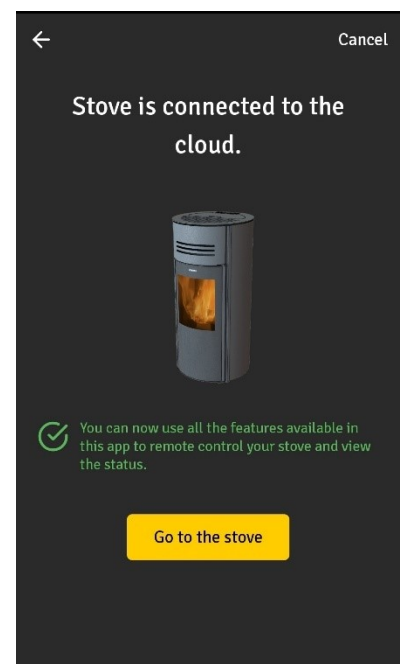
Once the Wi-Fi module has established a network connection, you can also add the stove on another device by scanning the QR code according to the description above (a. Ethernet connection).



Picture 8



Picture 9



Picture 10

6. General explanation of the Wi-Fi module

To restart the Wi-Fi module, turn off your stove on the main switch and turn it on again.

a. **LED light description**

Solid **green**: The device is connected to the internet (either via ethernet or Wi-Fi).

Solid **blue**: The device is ready to be connected to the internet.

Solid **red**: Error. The device should be factory reset.

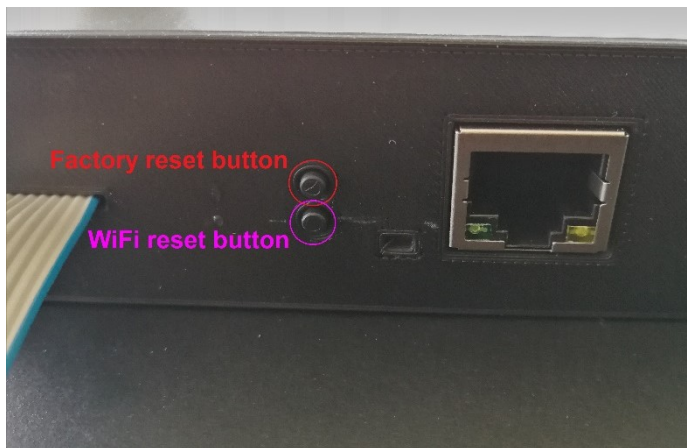
b. **Wi-Fi reset**

If you want to connect to another Wi-Fi network, you must reset the Wi-Fi.

Press and hold the Wi-Fi-reset button (see picture 11). The LED will flash **pink**. When it starts to flash **orange**, the Wi-Fi-reset is completed, and you may release the button. As soon as the LED is solid **blue**, the module is ready to be connected to another Wi-Fi network.

c. **Factory reset**

Press and hold the factory-reset button (see picture 11). The LED will flash **red** and eventually turn solid **red**. When it starts to flash **orange**, the factory-reset is completed, and you may release the button. As soon as the LED is solid **blue**, the module is ready to be connected.



Picture 11